

# ARCHITECTURAL METALWORK

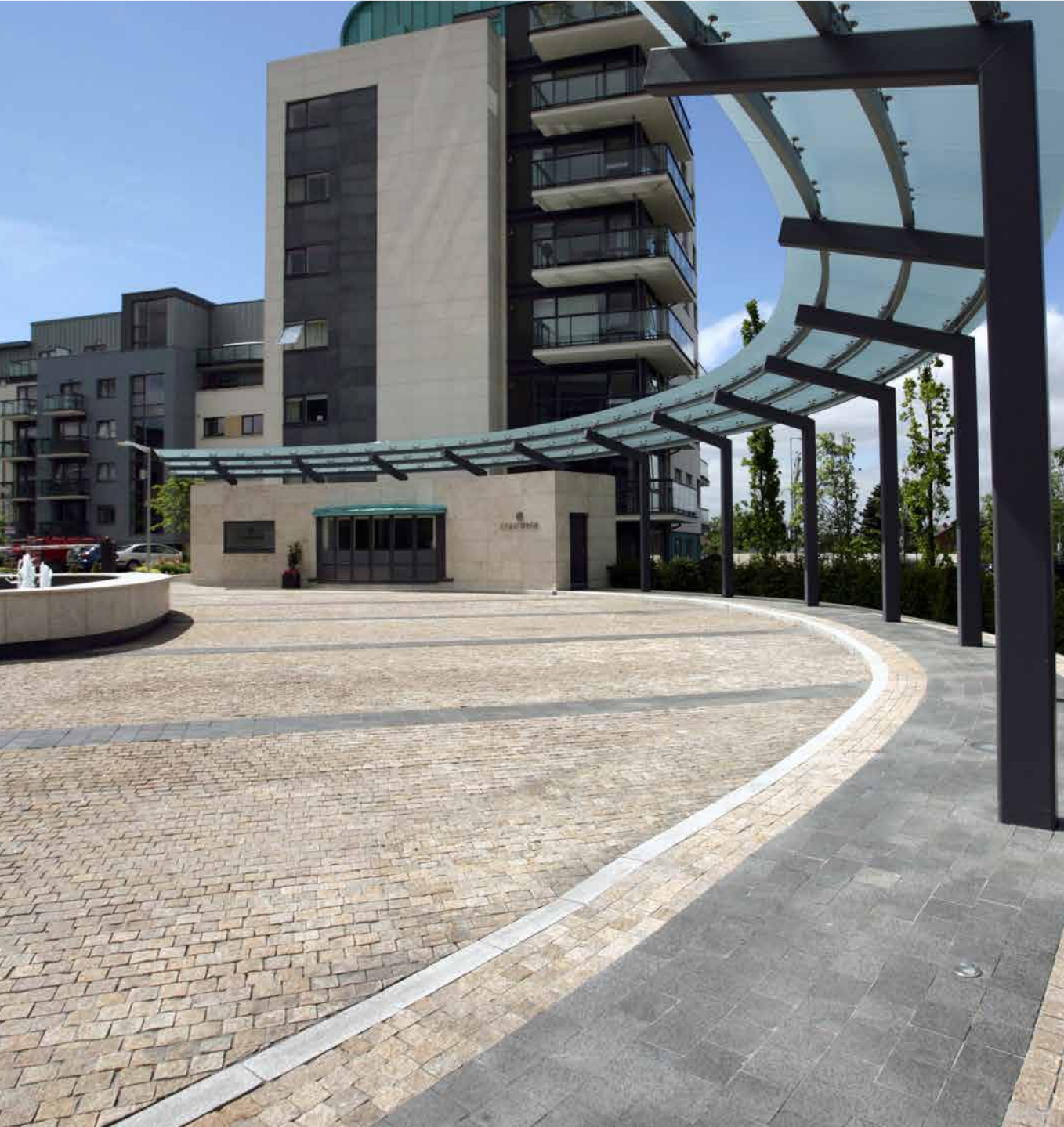


**Daniel Whelan  
Engineering Works  
Limited**



Daniel Whelan Engineering Works Limited is a manufacturer and supplier of architectural steelwork dedicated to our belief in the principles of quality and service. Since 1972 we have been based in Borris, Co. Carlow and have established a reputation for innovative designs of gates, railings, balconies and much more, with attention to customer requirements, tailored to suit their individual needs.

We are able to process our customer requirements from initial concept through to CAD design, fabrication and installation in both mild and stainless steel. In addition to these services, we are reputed as restorers of railings and gates from bygone eras and pride ourselves on using manufacturing techniques which would have been used by craftsmen from centuries ago. We have a proven and tested relationship with our partners in galvanizing, powdercoating, joinery and glazing.



CONTENTS



4  
BALCONIES



5  
BALUSTRADING



6  
RAILINGS



7  
GATES



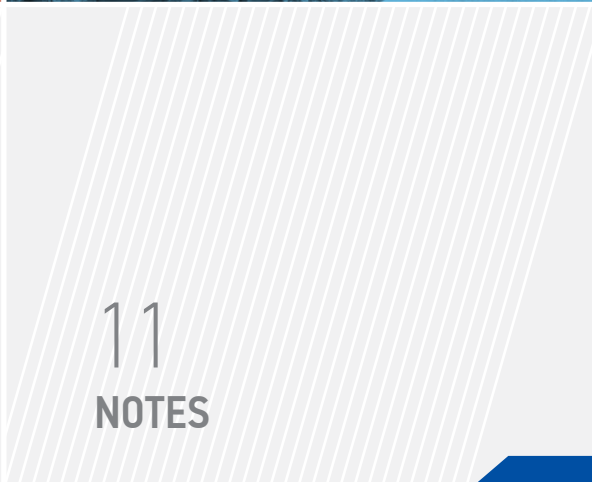
8  
FEATURE PRODUCTS



9  
RESIDENTIAL



10  
BIN ENCLOSURES

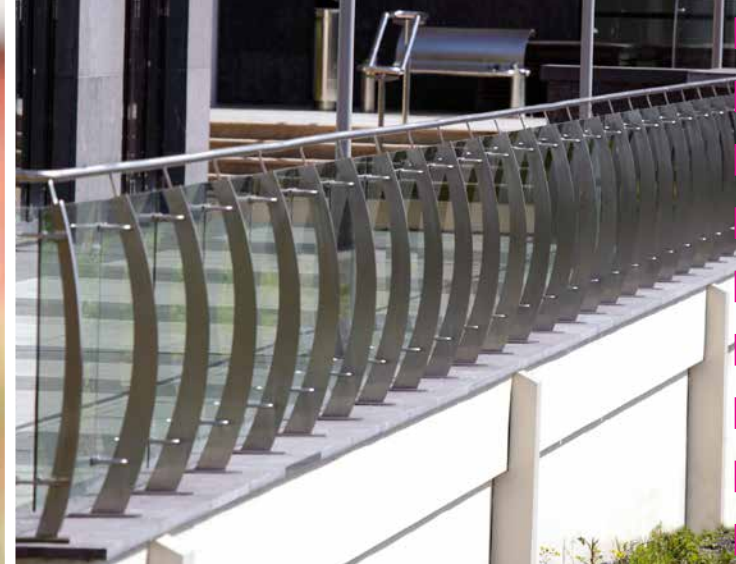


11  
NOTES















## A circular inset image showing a black hydraulic cylinder supporting a wooden structure, likely a part of a machine or a piece of furniture.



- Ideal for private, terraced and housing with no access to back gardens
- Aesthetically pleasing & a welcomed addition of furniture to any residence
- User friendly gas rams ensures easy to lift open and safe closure of lid
- Each bin enclosure comes with a lockable lid for added security
- Unrivalled safety & user friendly design



Length (mm)	Width (mm)
2050	900
Height (mm)	
1300	

This image shows a single sheet of white paper with horizontal ruling lines. The lines are evenly spaced and run across the width of the page. There are no margins, text, or other markings on the paper.



**Galway Office**  
 Gray Office Park, Galway Retail Park,  
 Headford Road, Galway, Ireland.  
 T: +353 (0) 91 428 051  
 E: [info@dwew.ie](mailto:info@dwew.ie)

**Cork Office**  
 Mahon Industrial Estate.  
 T: +353 (0) 21 453 6133

**Carlow Office**  
 Borris, Co. Carlow, R95 XN56, Ireland.  
 T: +353 (0) 59 977 3178



[www.danielwhelanengineering.ie](http://www.danielwhelanengineering.ie)